



CHICAGO CORINTHIAN YACHT CLUB



SAILING INSTRUCTIONS - AMENDMENT #1 -- Kaczmarek Long Distance Race --

1. CLASS BREAKS & STARTING TIMES‡

1.1. Tentative Class Breaks & Starting times

Class	Rating Band	Signal Flag	Warning	Start
1	- infinity > 66	1	1035	1040
2	67 > + infinity	2	1030	1035

‡ Class starts may be combined by the RC.

2. COURSE

2.1. A course will be chosen by the Race Committee from the following list. The chosen course's letter designation shall be displayed on a white mark up board by the Race Committee no later than 10 minutes prior to the first warning signal. The Race Committee may or may not also fly a pennant with the course's letter designation. To the extent possible the Race Committee shall also broadcast the choice of course on channel 78 VHF. There are 10 possible courses. The denotation "P" or "S" after the name of the mark indicates the side on which the mark shall be passed. Otherwise, marks are to be left on the side noted after the course length.

2.2.

E:	SA1 > E2 > SE2 > R4 > 4 Mile Crib "P" > FIN	(22.88 NM, STARBOARD)
N:	SA1 > V > T > SE2 > 4 Mile Crib > FIN	(19.97 NM, STARBOARD)
NE:	SA1 > T > SE2 > 4 Mile Crib > FIN	(17.85 NM, STARBOARD)
NE-:	SA1 > T > SE2 > Dever Crib > FIN	(13.74 NM, STARBOARD)
NW:	SA1 > NW > V > T > SE2 > 4 Mile Crib > FIN	(20.24 NM, STARBOARD)
S:	SA1 > S > 4 Mile Crib > T > V > FIN	(19.60 NM, PORT)
S-:	SA1 > S > SE2 > V > FIN	(13.76 NM, PORT)
SE:	SA1 > SE2 "S" > 4 Mile Crib "S" > T "P" > V "P" > FIN	(21.05 NM)
SW:	SA1 > SW > 4 Mile Crib > T > V > FIN	(20.07 NM, PORT)
W:	SA1 > W > V > T > SE2 > 4 Mile Crib > FIN	(20.80 NM, STARBOARD)



CHICAGO CORINTHIAN YACHT CLUB



SAILING INSTRUCTIONS - AMENDMENT #1 -- Kaczmarek Long Distance Race --

2.3. CCYC MAINTAINED MARKS

CCYC MARKS	Note	Color	Approximate Latitude/Longitude		Description
CP (SA1)		Orange	N41.57.740	W087.36.400	CCYC center pin
N	360 T, .75NM > CP	Orange/White	N41.58.490	W087.36.400	CCYC north mark
NE	045 T, .75NM > CP	White	N41.58.270	W087.35.690	CCYC northeast mark
E	090 T, .75NM > CP	White	N41.57.740	W087.35.400	CCYC east mark
SE	135 T, .75NM > CP	White	N41.57.210	W087.35.690	CCYC southeast mark
S	180 T, .75NM > CP	White	N41.56.990	W087.36.400	CCYC south mark
SW	225 T, .75NM > CP	White	N41.57.210	W087.37.110	CCYC southwest mark
W	270 T, .75NM > CP	White	N41.57.740	W087.37.400	CCYC west mark
NW	315 T, .75NM > CP	White	N41.58.270	W087.37.110	CCYC northwest mark
V	001 T, 3.0 NM > CP	White	N42.00.740	W087.36.400	CCYC distant north mark
T	045 T, 3.4 NM > CP	White	N42.00.120	W087.33.070	CCYC distant northeast mark
E2	090 T, 3.0 NM > CP	White	N41.57.740	W087.32.400	CCYC distant east mark
SE2	135 T, 4.0 NM > CP	White	N41.55.830	W087.31.630	CCYC distant southeast mark

3. SAFETY

3.1. Yachts shall be equipped according to CASRA Nearshore Safety Requirements

4. FINISHING

4.1. The finish line will be between an orange flag flown on shore located on the southern side of Montrose point at an approximate position of N 41.57.721 W 087.38.049 and an orange tetrahedron located at approximately N 41.57.676 W 087.37.736 (about 300 yards offshore). Boats are to pass through this line in the same approximate course as taken from the first previous mark to the finish. **Sail number boards must be displayed on the shore side of the boat at the finish.** The material used in the construction of the sail number board is optional.

4.2. No yacht finish report shall be required. Boats are to contact the race committee on channel 78 approximately one half mile before they finish. Upon finishing boats are required to contact the race committee and report their finish time according to GPS time and shall receive confirmation from the Race Committee that they have finished.

5. TIME LIMIT

5.1. The time limit shall be 17:00 hours plus any time between a class' scheduled start and the actual start due to postponement or recall. Any boat which withdraws from the race after the start shall report their withdrawal to the Race Committee on channel 78 at their first opportunity.



CHICAGO CORINTHIAN YACHT CLUB



SAILING INSTRUCTIONS - AMENDMENT #1 -- Kaczmarek Long Distance Race —

6. DOCKAGE

6.1. Rafting privileges will be extended for entered yachts. There is no need to contact the harbor master. All are welcome to enter the harbor and tie up.

SEE FOLLOWING PAGES FOR COURSE DIAGRAMS.



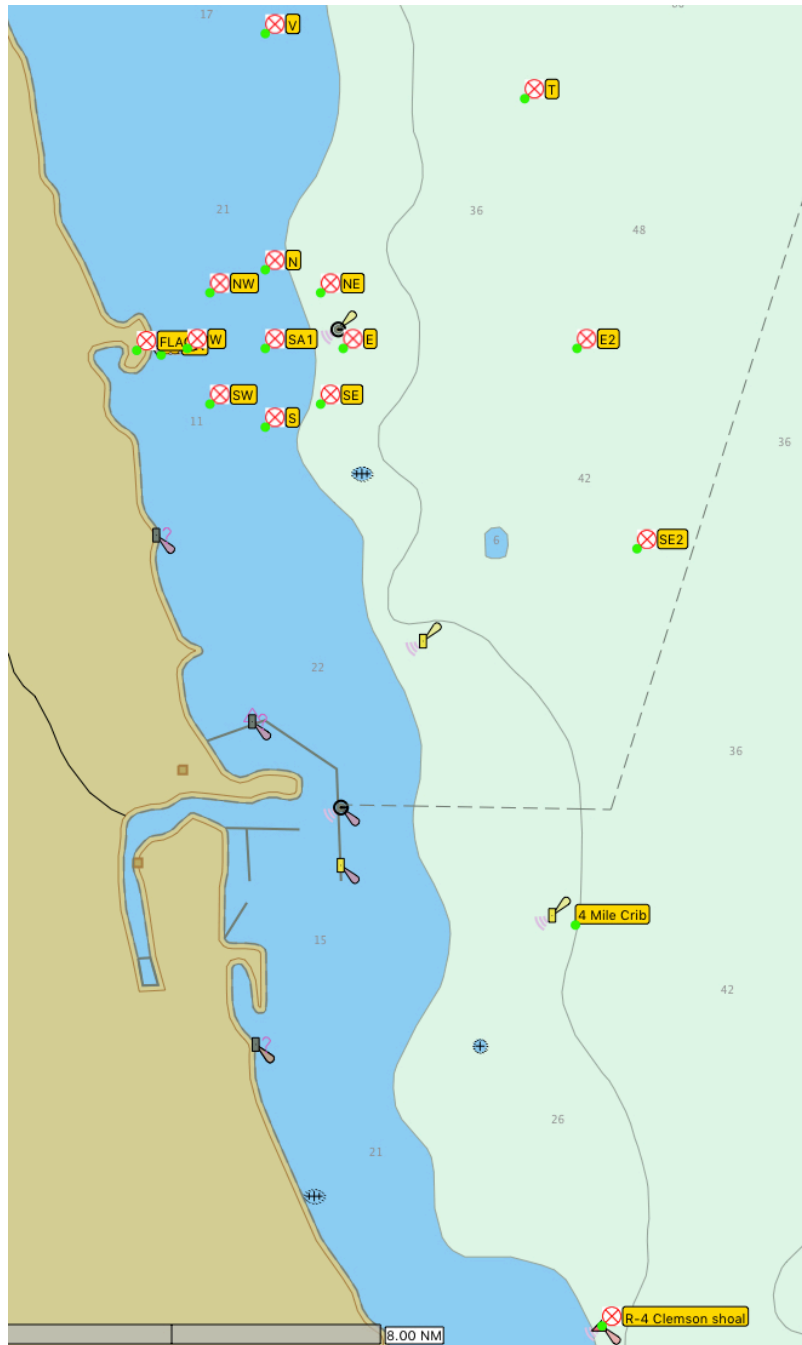
CHICAGO CORINTHIAN YACHT CLUB



SAILING INSTRUCTIONS - AMENDMENT #1 -- Kaczmarek Long Distance Race --

COURSE DIAGRAMS

- ALL MARKS DEPICTED



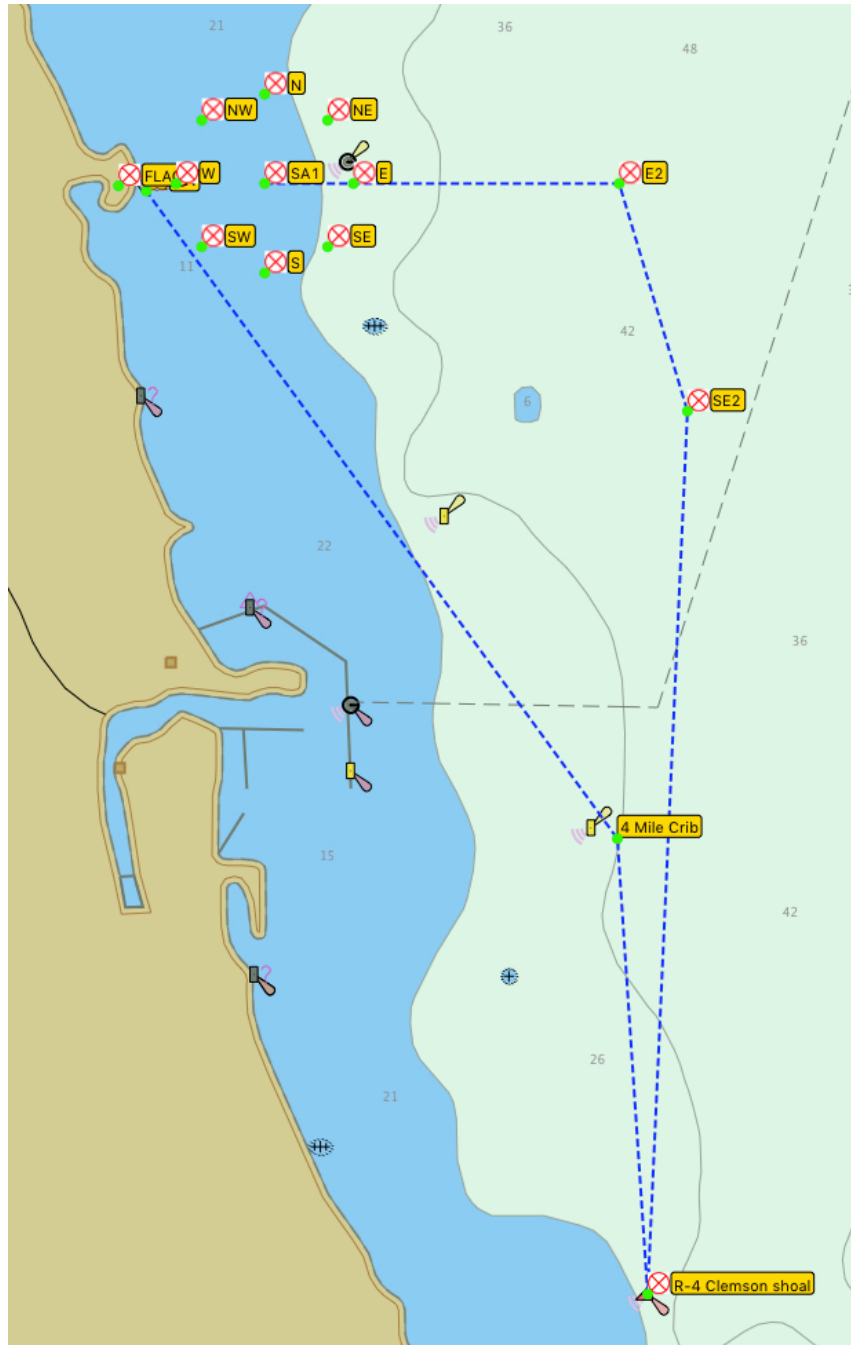


CHICAGO CORINTHIAN YACHT CLUB



SAILING INSTRUCTIONS - AMENDMENT #1 -- Kaczmarek Long Distance Race --

COURSE "E" (22.96NM)



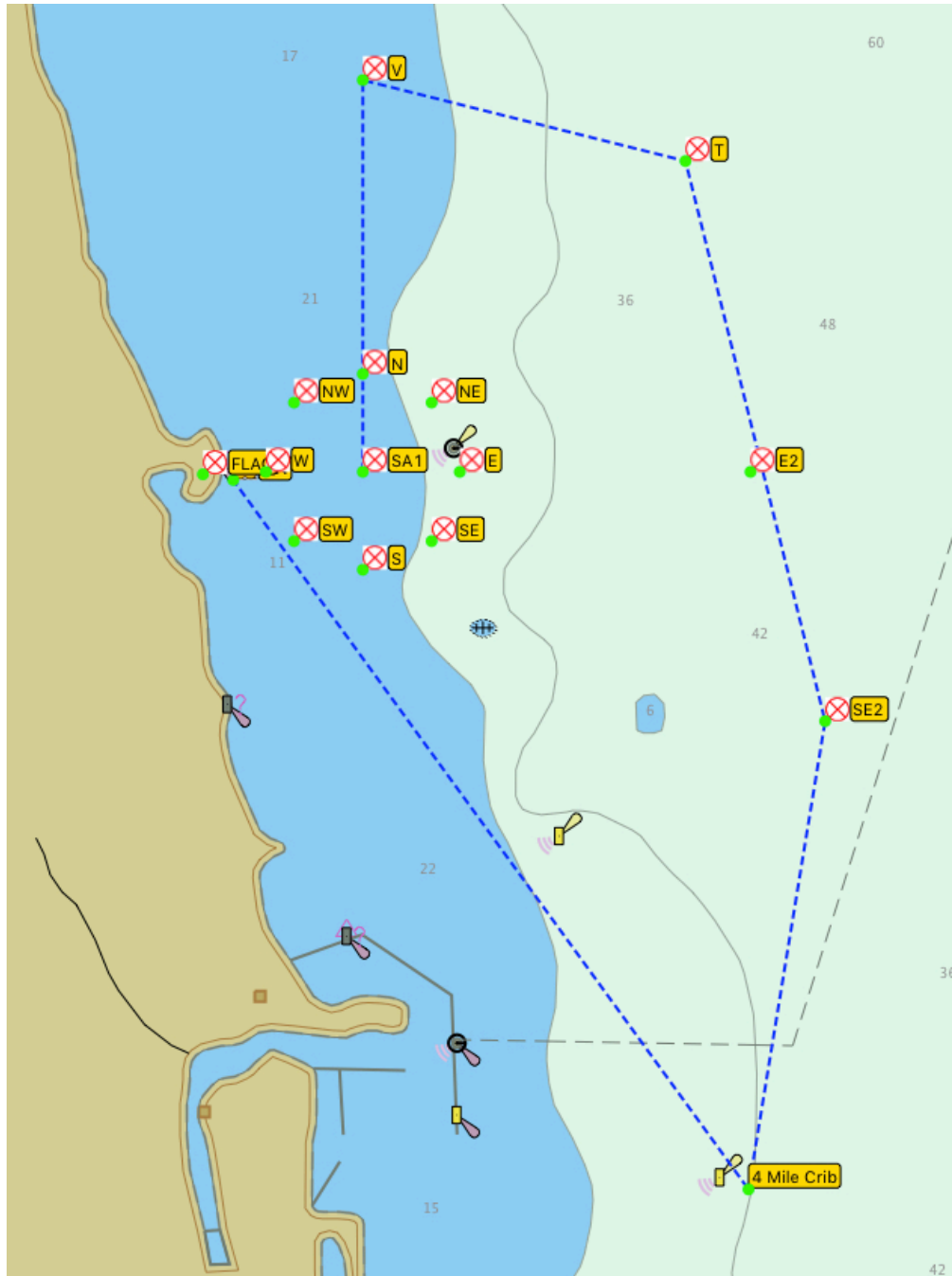


CHICAGO CORINTHIAN YACHT CLUB



SAILING INSTRUCTIONS - AMENDMENT #1 -- Kaczmarek Long Distance Race --

COURSE "N" (20.33NM)



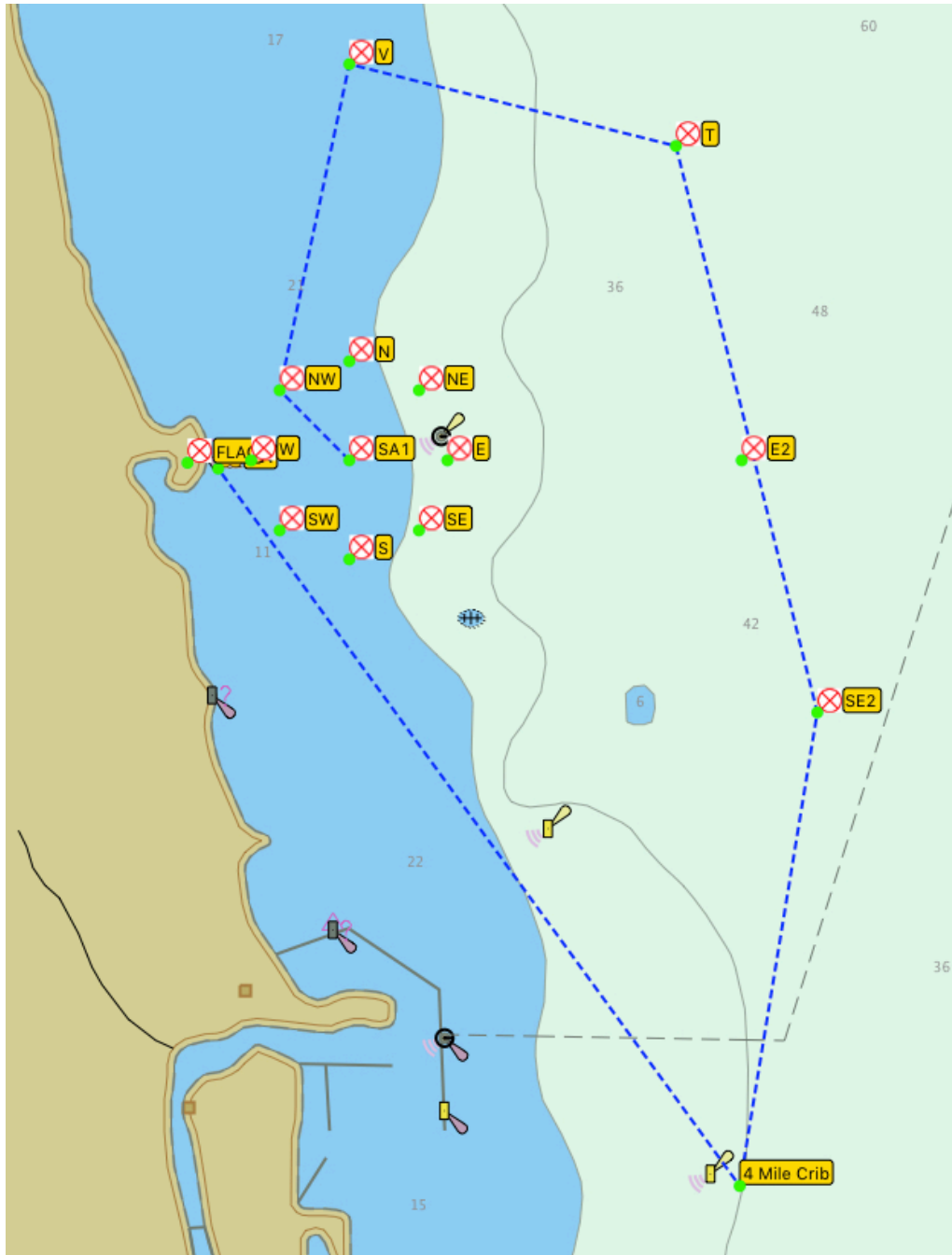


CHICAGO CORINTHIAN YACHT CLUB



SAILING INSTRUCTIONS - AMENDMENT #1 -- Kaczmarek Long Distance Race --

COURSE "NW" (20.61NM)



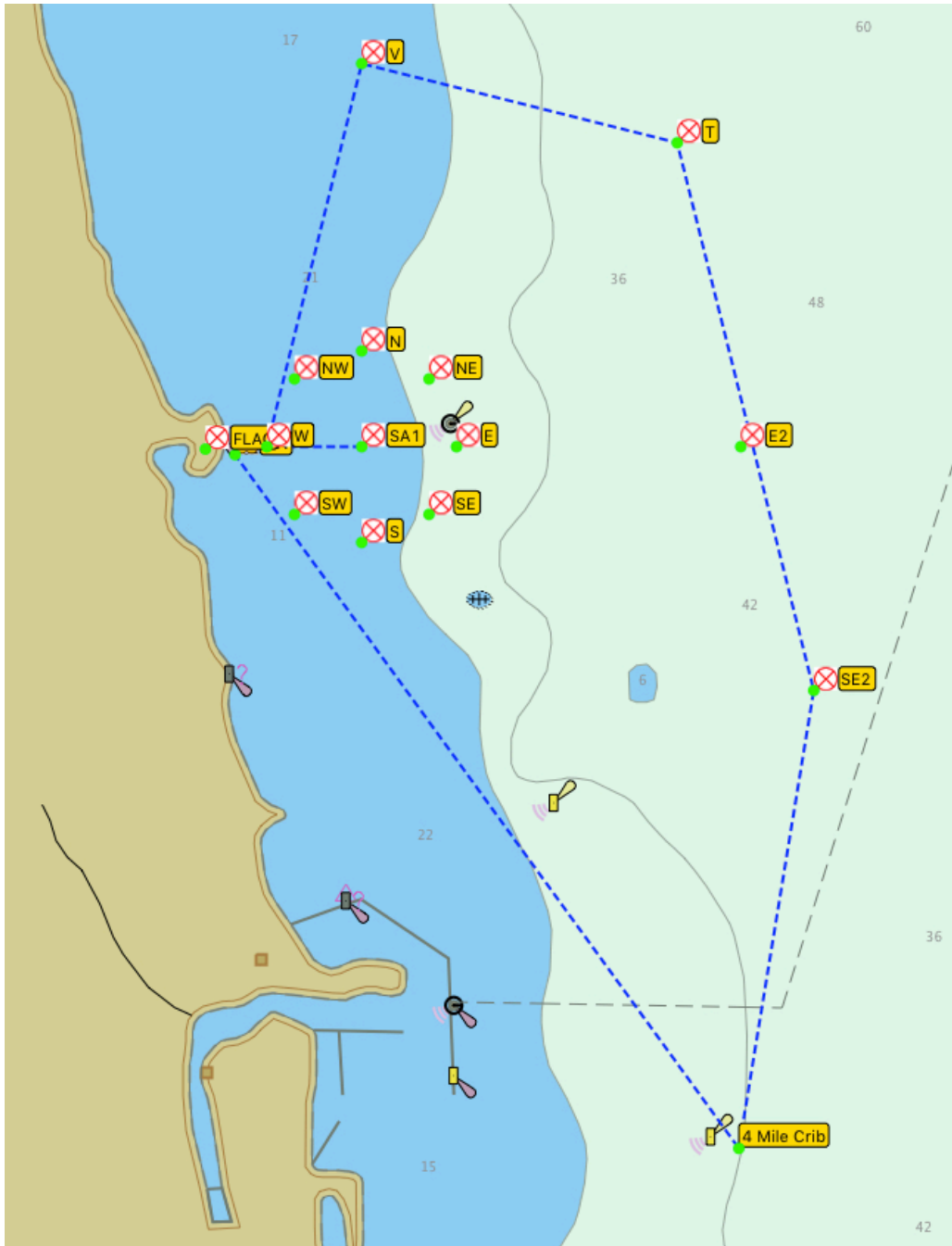


CHICAGO CORINTHIAN YACHT CLUB



SAILING INSTRUCTIONS - AMENDMENT #1 -- Kaczmarek Long Distance Race --

COURSE "W" (21.17NM)



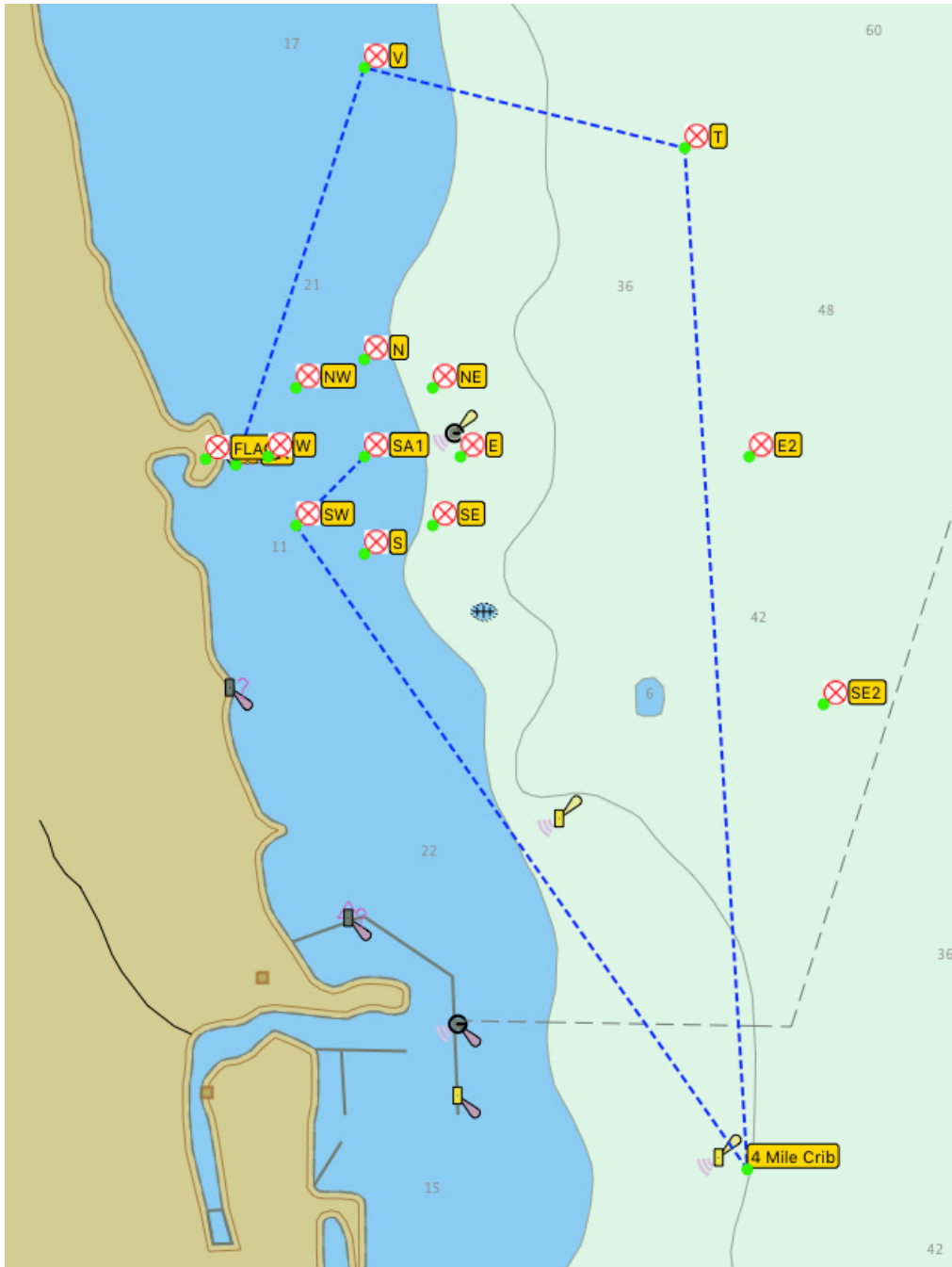


CHICAGO CORINTHIAN YACHT CLUB



SAILING INSTRUCTIONS - AMENDMENT #1 -- Kaczmarek Long Distance Race --

COURSE "SW" (20.49NM)



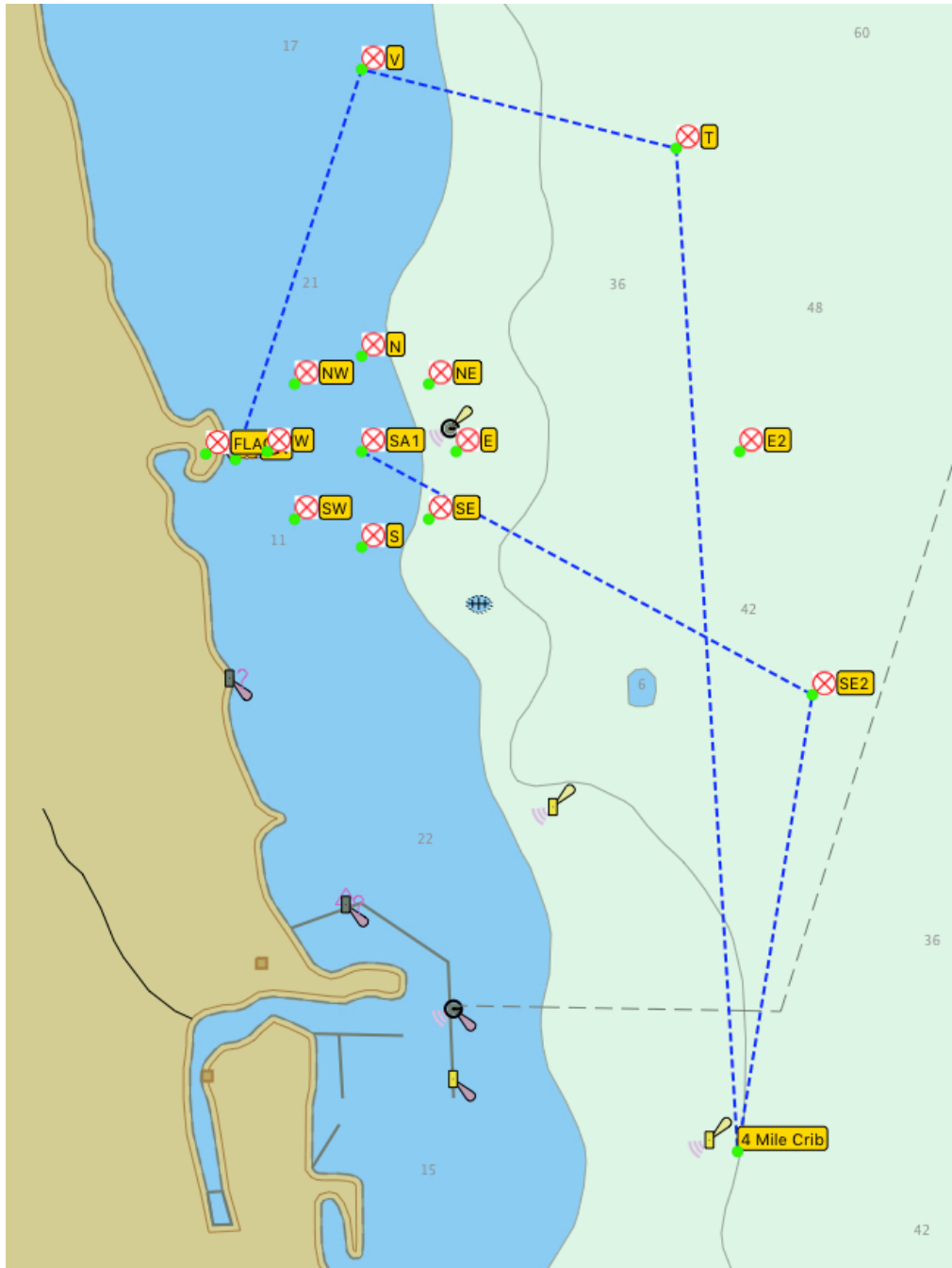


CHICAGO CORINTHIAN YACHT CLUB



SAILING INSTRUCTIONS - AMENDMENT #1 -- Kaczmarek Long Distance Race --

COURSE "SE" (21.33NM)



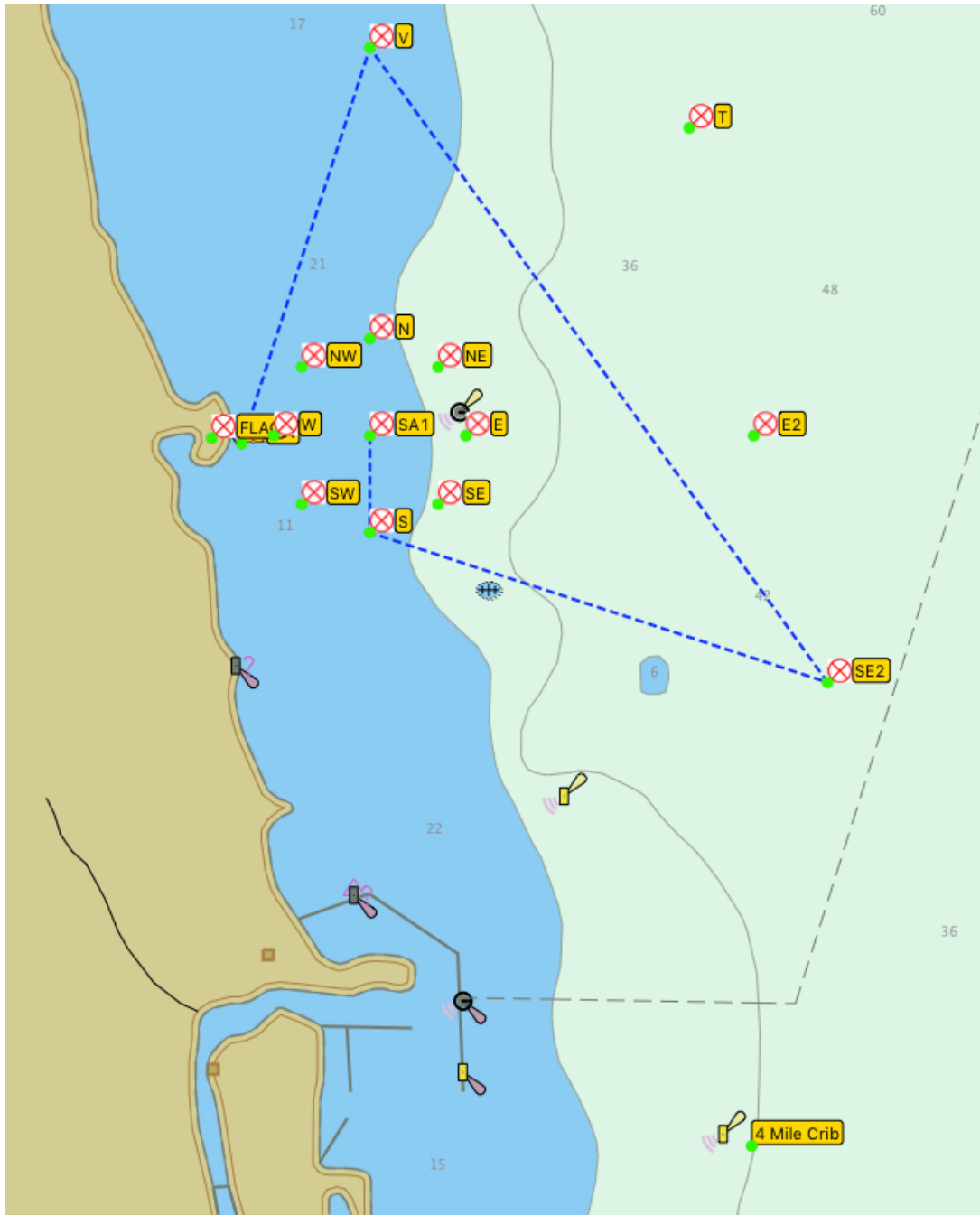


CHICAGO CORINTHIAN YACHT CLUB



SAILING INSTRUCTIONS - AMENDMENT #1 -- Kaczmarek Long Distance Race --

COURSE "S-" (13.76NM)



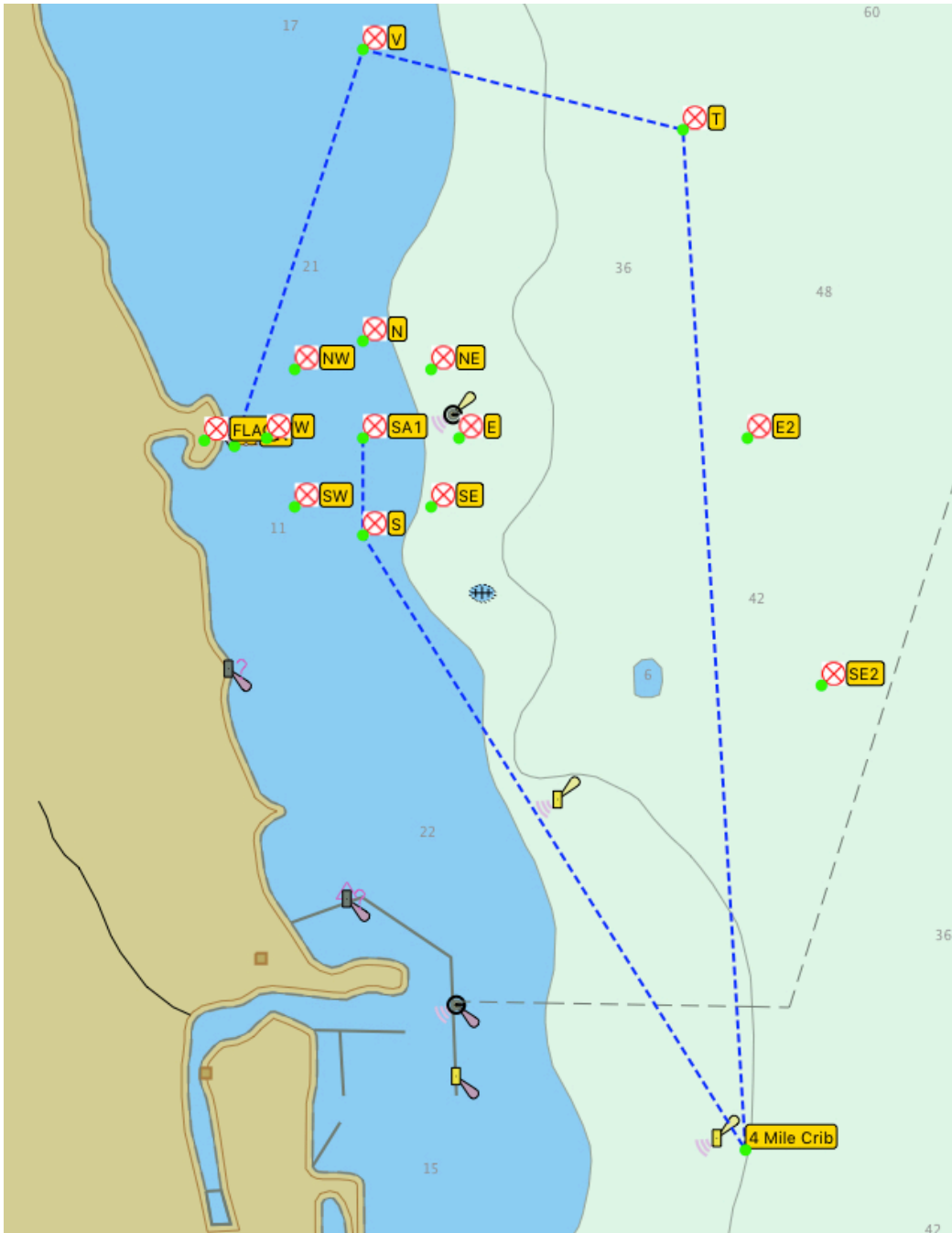


CHICAGO CORINTHIAN YACHT CLUB



SAILING INSTRUCTIONS - AMENDMENT #1 -- Kaczmarek Long Distance Race --

COURSE "S" (20.01NM)



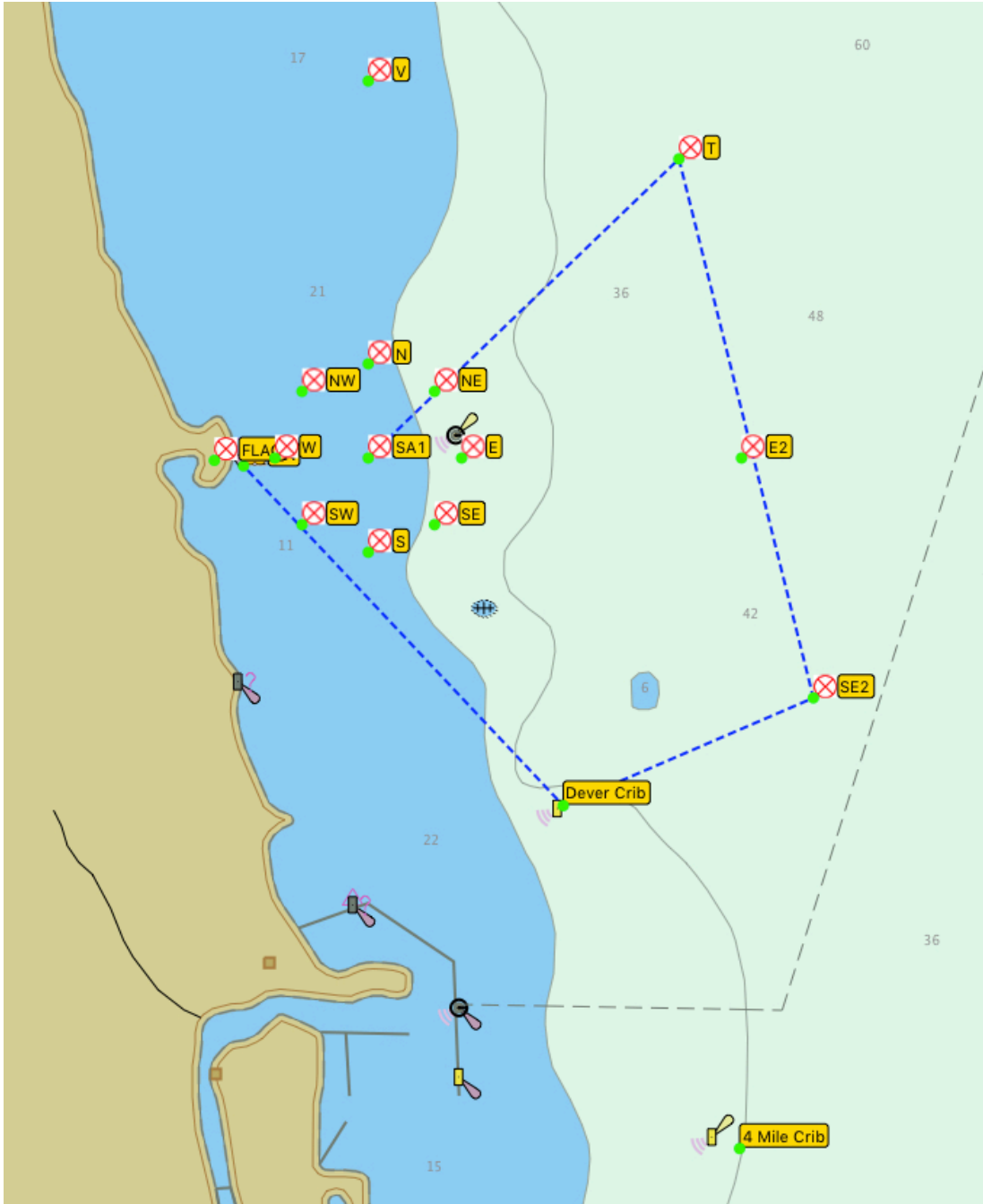


CHICAGO CORINTHIAN YACHT CLUB



SAILING INSTRUCTIONS - AMENDMENT #1 -- Kaczmarek Long Distance Race --

COURSE "NE-" (13.74NM)





CHICAGO CORINTHIAN YACHT CLUB



SAILING INSTRUCTIONS - AMENDMENT #1 -- Kaczmarek Long Distance Race --

COURSE "NE" (18.22NM)

